



MONTHLY MEMBERSHIP PROGRESS REPORT

Results as of: 1/31/2015

Multiple District 23

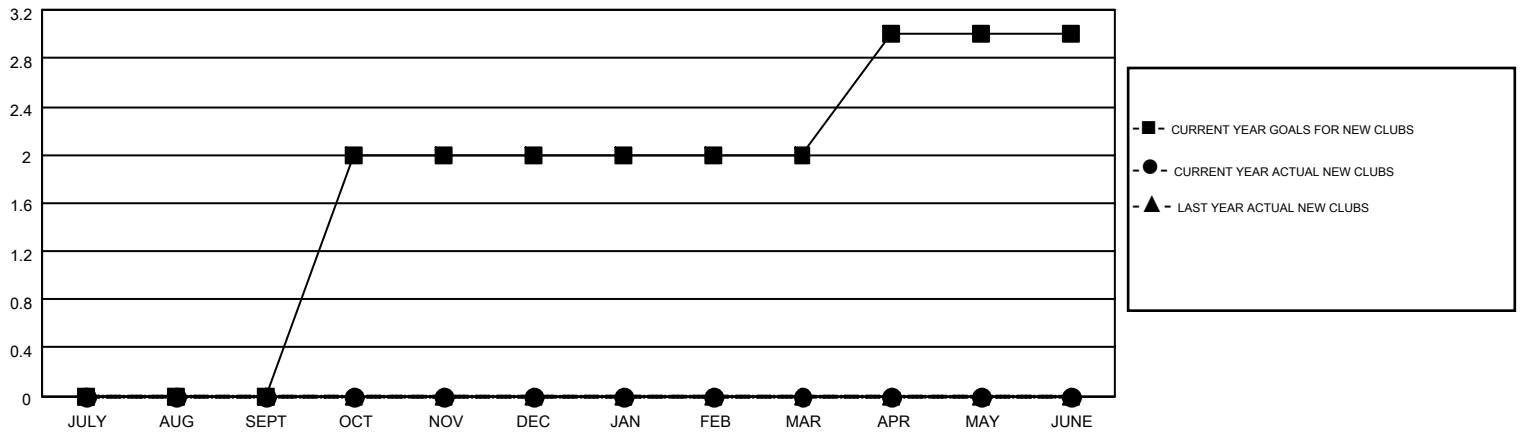
LOCATION: CONNECTICUT

GMT: ED LECIUS

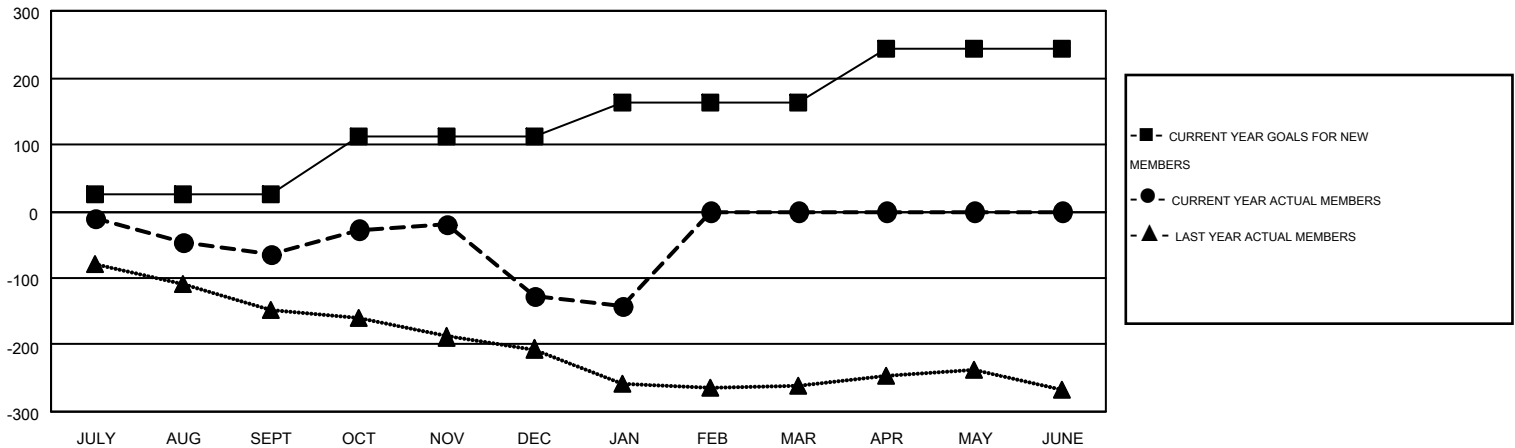
GMT CA 1

Clubs					Members				
RESULTS FOR 2014-2015					RESULTS FOR 2014-2015				
QUARTER	NEW CLUB GOAL	NEW CLUBS	DROPPED CLUBS	NET GAIN/LOSS	QUARTER	NEW MEMBER GOAL	CHARTER AND NEW MEMBERS ADDED	DROPPED MEMBERS	NET GAIN/LOSS
JULY/AUG/SEPT	0	0	0	0	JULY/AUG/SEPT	25	80	143	-63
OCT/NOV/DEC	2	0	2	-2	OCT/NOV/DEC	88	137	202	-65
JAN/FEB/MAR	0	0	0	0	JAN/FEB/MAR	51	35	48	-13
APR/MAY/JUNE	1	0	0	0	APR/MAY/JUNE	80	0	0	0

GOALS AND ACTUAL NEW CLUBS CUMULATIVE



GOALS AND ACTUAL MEMBERS CUMULATIVE



DROPPED CLUBS: 2	86 CLUBS OF 154 ADDED 1 OR MORE NEW MEMBERS	<u>GENDER DISTRIBUTION</u>	
		MALE	3,474 (68.68%)
		FEMALE	1,584 (31.32%)
<u>DROPPED MEMBERS</u>		<u>FAMILY UNIT MEMBERS</u> 807	
DECEASED	36	<u>HEAD OF HOUSEHOLD</u> 390	
CLUB CANCELLED	9	<u>NON-HEAD OF HOUSEHOLD</u> 417	
OTHER	348		
TOTAL	393		

[CLICK HERE FOR HEALTH ASSESSMENT DATA](#)